

# Swivel castor with total lock SMMST 151 PEK

Extra Heavy Duty Series SMM - Wheel PE

-40 °C - +80 °C

- +++

swivels easily
- +++

wear resistant
- +++

shock proof
- +++

floor protective
- +++

weather proof

## Wheel



Casted high quality nylon wheel

## Fork



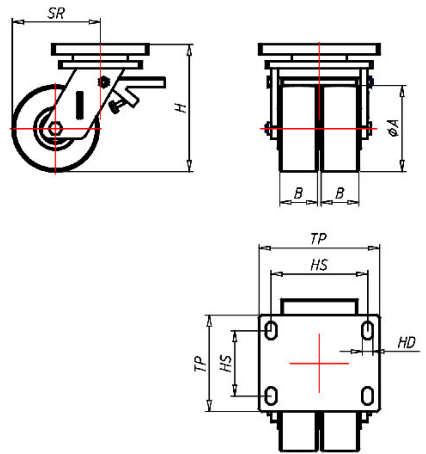
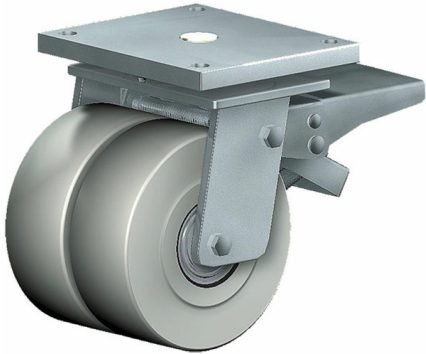
Solid steel welded construction, with axial grooved ball bearing DIN 711 and tapered roller bearing DIN 720, very strong integrated Kingpin, with grease nipple, sealed with 2 o-rings finish: alu-grey painted on request: zinc-plated and passivated (chrom VI-free)

Swivel castor with total lockWheel-Ø A x width B mm: 150x55+55	
Load Capacity kg:	3000
Load capacity tested according to EN 12530 and EN 12527	
Overall height H mm:	215
Dimension of top plate TP	175x140
mm:	
Hole spacing HS mm:	140x105
Hole-Ø HD mm:	15
Swivel radius SR mm:	150
Wheel bearing:	Ball bearing

## Advantages

- ✓ for extra heavy loads
- ✓ easy running on smooth floors
- ✓ impact proof
- ✓ high abrasion resistance
- ✓ easy to clean
- ✓ high chemical resistance

©Copyright 2024 Rollenbau GmbH, www.rollenbau.at 20.05.2024



## Applications

- Metal-Technology
- Heavy duty dollies
- Trash container trucks
- Machinery moving dollies
- Workshops
- Racks
- Building-Industry